

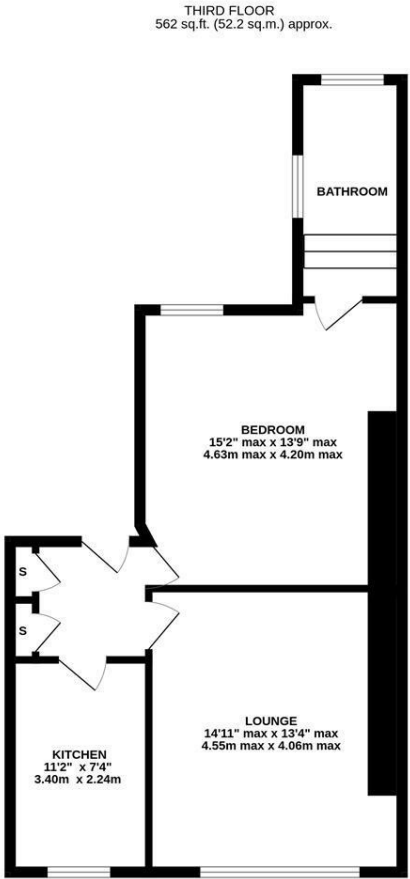


Within walking distance to Newcastle City Centre, a one bedroom third-floor conversion apartment ideally located at Victoria Square, Jesmond within a stone's throw from the universities, Newcastle's hospitals, the shops, restaurants and cafés of Jesmond and indeed Newcastle City Centre itself.

The accommodation briefly comprises: communal entrance door with secure telephone entry system and stairs to all floors; hallway with two storage cupboards; lounge measuring almost 15ft; kitchen with fitted units and work surfaces; 15ft double bedroom; bathroom complete with three piece suite.

3rd Floor Conversion Apartment | 562 Sq ft (52.2m2) | One Bedroom | Lounge | Kitchen | Bathroom | Leasehold with Share of Freehold | Lease Extension to 99 Years Underway | Service Charge £600 Per Annum | Council Tax Band A | EPC: D

EPC = D



TOTAL FLOOR AREA : 562 sq.ft. (52.2 sq.m.) approx.
Whilst every attempt has been made to ensure the accuracy of the floorplan contained here, measurements of doors, windows, rooms and any other items are approximate and no responsibility is taken for any error, omission or mis-statement. This plan is for illustrative purposes only and should be used as such by any prospective purchaser. The services, systems and appliances shown have not been tested and no guarantee as to their operability or efficiency can be given.
Made with Metropix ©2023

Offers Over £130,000

IMPORTANT NOTE: These particulars and the descriptions and measurements herein do not constitute representation and whilst every effort has been made to ensure accuracy, this cannot be guaranteed.

